

Gel Logic 4000 PRO

**The ultimate in price performance:
greater sensitivity at a lower price!**

The new **Gel Logic 4000 PRO** is a fully automated premium luminescent, UV-fluorescent, and radioisotopic imaging system for the basic research community. Designed for speed and sensitivity, the GL4000 PRO can image a wide range of sample formats such as gels (DNA/Coomassie/Silver stain), membranes (Western, Southern, Northern blots), colony and microtiter plates.

Features include a 4.2 MP scientific grade cooled (-29°C) camera, f/0.95 lens, advanced LED lighting, and 10 filter positions for the most versatile instrumentation for luminescent and UV-based fluorescent imaging assays.

Also included is Carestream Molecular Imaging software to allow full control over the camera system as well as accurate quantitative analysis of 16-bit single image captures with n-bit data accumulation.

Also included is Carestream Molecular Imaging software to allow full control over the camera system as well as accurate quantitative analysis of 16-bit single image captures with n-bit data accumulation.



Gel Logic 4000 PRO offers innovative and advanced functionality for quick capture of high resolution images of gels, blots, and plates.

- **Cooled 4.2 megapixel scientific grade camera** for high resolution detection of luminescent samples
- **f/0.95 lens** and motorized elevator with 3X zoom for samples up to 18 x 18 cm
- **Full featured software** for accurate quantitative analysis of 16-bit single image captures
- **Standard UV illumination** for sensitive, quantitative imaging of UV fluorescence
- **LED illumination** for white light applications and long lasting, energy-efficient operation
- **Automated computer-controlled configuration** minimizes setup time & maximizes productivity

Learn more!

For more information call **1-877-747-4357**, exp. code 7.
Outside the U.S. call **+1-203-786-5658**. Or visit us online at

→ mi.carestream.com

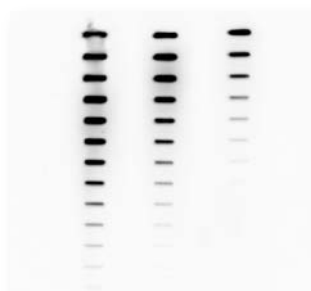
Carestream
Molecular Imaging

one source
for all your molecular imaging needs

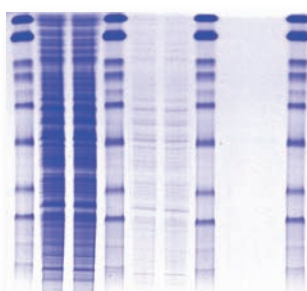
Gel Logic 4000 PRO

APPLICATIONS & PRODUCT SPECIFICATIONS

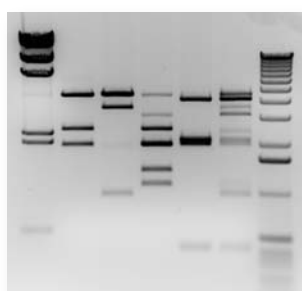
Ideal for a wide range of *in vitro* imaging applications



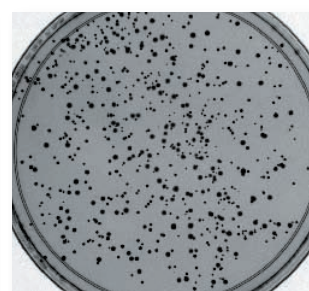
CHEMI SLOT BLOT



COMMASSIE GEL

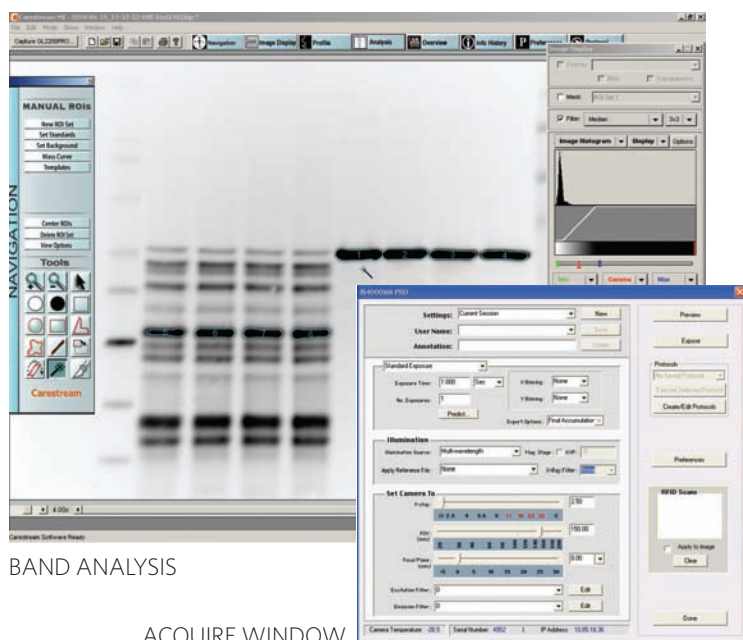


ETHIDIUM BROMIDE GEL



BACTERIAL PLATE

Image Capture & Analysis Software



BAND ANALYSIS

ACQUIRE WINDOW

Carestream Molecular Imaging Software

Included with your Gel Logic 4000 PRO system is a 3-user full feature version of our Molecular Imaging software, which includes all the necessary tools for image control, band analysis/ densitometry, and the addition of annotations.

While Carestream Molecular Imaging products can be used for *in vivo* and *in vitro* molecular imaging of materials, researchers should be aware that the methods of preparing and viewing the materials for molecular imaging may be subject to various patent rights. All images were captured using Carestream Molecular Imaging systems.

Carestream Health, Inc.
4 Research Drive
Woodbridge, CT 06525

 mi.carestream.com

Carestream is a trademark of Carestream Health Inc. Carestream Molecular Imaging is a division of Carestream Health. © Carestream Health Inc. Printed in USA, March 2011

Gel Logic 4000 PRO Technical Specifications

CAMERA	
Type	Monochrome interlined CCD
CCD	2048 x 2048 pixels, 4.2 megapixels
Lens	f/0.95 fixed lens, 3X magnification
ILLUMINATION	
Fluorescence	Trans-UV illumination standard
White Light	White Light trans and epi-illumination standard
Epi-UV	254nm, 306nm, 370nm (optional)
FILTERS	
Filter Positions	10 positions, motorized
Emission Filters	600nm WA (standard), 5 (optional)
PERFORMANCE	
Field of View	Supports up to 18 x 18 cm
Dynamic Range	>4.0 orders of magnitude
Data Acquisition	16-bit single capture, n-bit data acquisition
COMPUTER	Windows XP/7 Professional and Intel Mac OS (10.5 or greater)
INTERFACE	Ethernet
DIMENSIONS (WxDxH)	55 x 43 x 36 cm
SOFTWARE	Molecular Imaging Software

Carestream
Molecular Imaging

one source
for all your molecular imaging needs