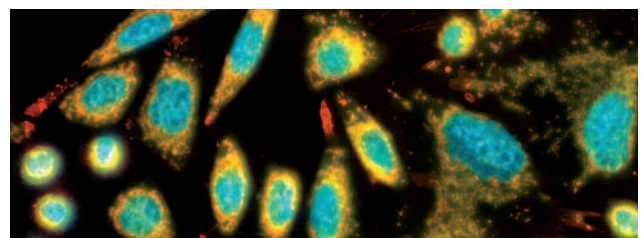
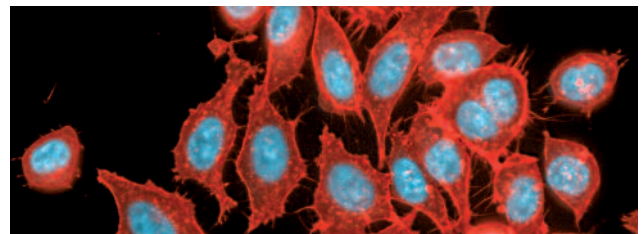


Imaging Chambers – The Convenient Way for Cell Imaging

New Imaging Chambers allow culturing, staining and fixation of cells in the same vessel

PAA's Imaging Chambers and lids are made of **high performance polymers** with better chemical resistance and temperature stability than the commonly used polystyrene. The chambers are sealed against the glass bottoms by **biologically inert silicone adhesive**. At the end of the experiments the **glasses can be easily detached** from the polymer chambers with minimal glue residue.

PAA offers Imaging Chambers with **cover glass (CG) and microscope slides** as bottom structure. Both types are available in **1 well, 2 well, 4 well and 8 well format**. Imaging Chambers CG are specially designed for high resolution live cell microscopy techniques. Imaging Chambers with microscope slides can be used with long distance objectives.



Applications

- ▶ Immunohistology
- ▶ Total Internal Reflection Fluorescence (TIRF)
- ▶ Fluorescence Resonance Energy Transfer (FRET)
- ▶ Differential Interference Contrast (DIC)
- ▶ Fluorescence In-Situ Hybridization (FISH)
- ▶ Long Term Storage

Features

- ▶ Easy removal of growth chamber
- ▶ Biologically inert glue
- ▶ Great chemical resistance
- ▶ High temperature stability up to +90 °C
- ▶ Optimal cell adhesion due to plasma treatment
- ▶ Perfectly leak-proof

Technical Information: Bottoms

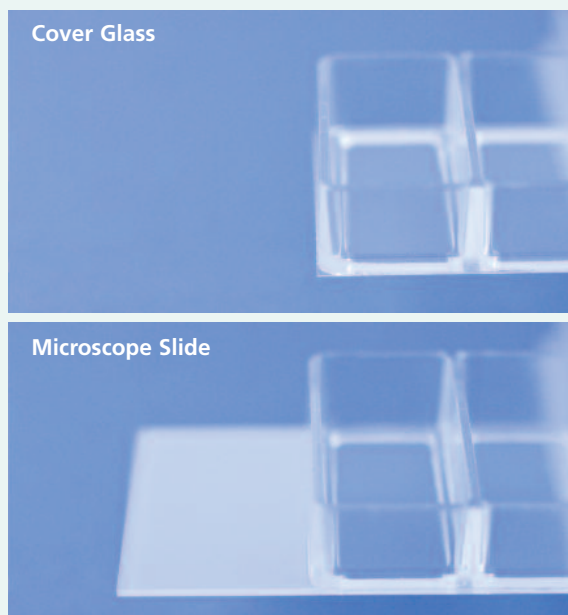
- ▶ Surface Treatment: Tissue Culture (TC)
- ▶ Refractive Index: 1.52
- ▶ Abbe´s Number: 55

Cover Glass:

- ▶ Borosilicate glass, hydrolytic class 1
- ▶ Thickness: 170 µm
- ▶ Dimensions: 26 mm x 58 mm

Microscope Slide:

- ▶ Soda lime glass, hydrolytic class 3
- ▶ Thickness: 1 mm
- ▶ Dimensions: 26 mm x 76 mm



Technical Information: Chambers

Chamber Format	Area / Well	Chamber Height	Working Volume
1 well	10,84 cm ²	10 mm	2000 µl
2 well	5,04 cm ²	10 mm	1000 µl
4 well	2,14 cm ²	10 mm	500 µl
8 well	0,88 cm ²	10 mm	300 µl

Order Information

Cat. No.	Product	Pieces / Bag	Purchase Unit (pcs)
PAA14220010X	Imaging Chambers CG, 1 well	4	16
PAA14220011X		4	80
PAA14220020X	Imaging Chambers CG, 2 well	4	16
PAA14220021X		4	80
PAA14220040X	Imaging Chambers CG, 4 well	4	16
PAA14220041X		4	80
PAA14220080X	Imaging Chambers CG, 8 well	4	16
PAA14220081X		4	80
PAA14110010X	Imaging Chambers, 1 well	4	16
PAA14110011X		4	80
PAA14110020X	Imaging Chambers, 2 well	4	16
PAA14110021X		4	80
PAA14110040X	Imaging Chambers, 4 well	4	16
PAA14110041X		4	80
PAA14110080X	Imaging Chambers, 8 well	4	16
PAA14110081X		4	80

Headquarters – Austria

Tel. +43 7229 64865
 Fax +43 7229 64866
 info@paa.com

Germany

Tel. +49 6421 17539-0
 Fax +49 6421 17539-18
 germany@paa.com

United Kingdom

Tel. +44 1935 411 418
 Fax +44 1935 411 480
 uk@paa.com

France

Tel. +33 1 300 415 04
 Fax +33 1 300 415 06
 france@paa.com