

# Image Station 4000MM PRO



**NEW!**

2 lens options: Fixed  
or 10X zoom

- Zoom lens option for multiple FOVs ( $f/2.5$ )
- Fixed lens option ( $f/0.95$ ) for up to 6X greater speed and enhanced sensitivity

The Image Station 4000MM PRO, our most advanced *in vitro* imaging system, provides the highest level of automation and precision for imaging chemiluminescent, UV and multiwavelength fluorescent, chromogenic and radioisotopic (with rad PADD option) labels in gels, blots, plates and more. Xenon illumination comes standard along with nine excitation filters and four emission filters.

The Image Station 4000MM PRO's automated features, excitation and emission filters, cooled 4.2 megapixel CCD camera, image depth and Carestream Molecular Imaging Software create a truly advanced imaging system that delivers the optimal combination of precision, versatility and performance that busy labs require. A manual version is also available: the Image Station 4000MM (zoom lens only).

**Image Station 4000MM PRO** offers superior image quality, unmatched imaging versatility and fast, convenient workflow.

- State-of-the-art cooled CCD camera technology and selectable multiwavelength illumination
- Application and experiment flexibility - choice of fixed lens ( $f/0.95$ ) or 10X optical zoom lens ( $f/2.5$ )
- Multiple Xenon illumination options: choice of 180W or 400W at time of purchase
- Automated filters for controlled configuration and outstanding fluorescent imaging sensitivity
- Smart digital positioning technology and high resolution CCD for precise, repeatable results
- Zoom lens option offers *in vivo* upgrade path for small animal imaging

## Learn more!

For more information call **1-877-747-4357**, exp. code 7.  
Outside the U.S. call **+1-203-786-5658**. Or visit us online at

→ [mi.carestream.com](http://mi.carestream.com)

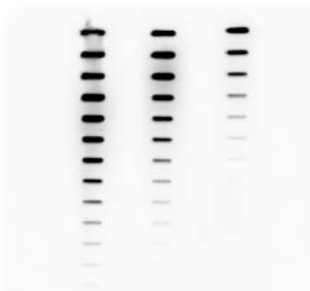
**Carestream**  
Molecular Imaging

**one source**  
for all your molecular imaging needs

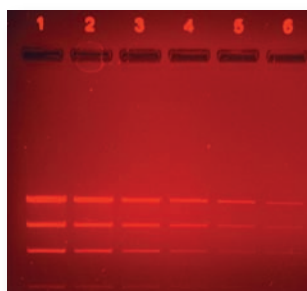
# Image Station 4000MM PRO

## APPLICATIONS & PRODUCT SPECIFICATIONS

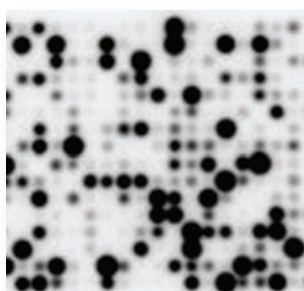
Ideal for a wide range of *in vitro* imaging applications



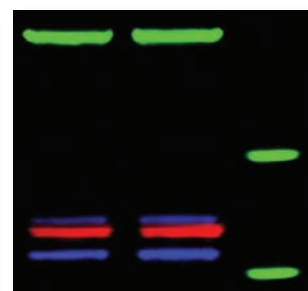
CHEMI SLOT BLOT



ETHIDIUM BROMIDE

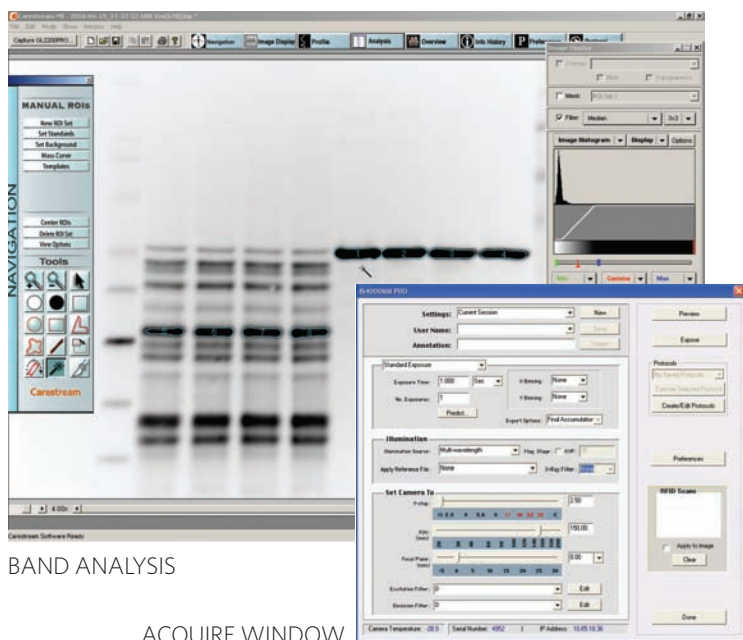


CHEMILUMINESCENT MICROARRAY



MULTIWAVELENGTH WESTERN BLOT

## Image Capture & Analysis Software



BAND ANALYSIS

ACQUIRE WINDOW

### Carestream Molecular Imaging Software

Included with your Image Station 4000MM PRO system is a 3-user full feature version of our Molecular Imaging software, which includes all the necessary tools for image control, band analysis/densitometry, and the addition of annotations.

While Carestream Molecular Imaging products can be used for *in vivo* and *in vitro* molecular imaging of materials, researchers should be aware that the methods of preparing and viewing the materials for molecular imaging may be subject to various patent rights. All images were captured using Carestream Molecular Imaging systems.

Carestream Health, Inc.  
4 Research Drive  
Woodbridge, CT 06525

 [mi.carestream.com](http://mi.carestream.com)

Carestream is a trademark of Carestream Health Inc. Carestream Molecular Imaging is a division of Carestream Health. © Carestream Health Inc. Printed in USA, March 2011

### Image Station 4000MM PRO Technical Specifications

<b>CAMERA</b>	
Type	Monochrome interlined CCD
CCD	2048 x 2048 pixels, 4.2 megapixels
Lens (2 options)	Zoom: Automated 10X zoom, 2 - 20 cm, <i>f</i> /2.5 Fixed: Single FOV, 13.5 x 13.5 cm, <i>f</i> /0.95
<b>ILLUMINATION</b>	
Fluorescence	Selectable multiwavelength epi-illumination 180W or 400W Xenon illumination
White Light	Trans/epi white light included
<b>STANDARD FILTERS</b>	
Excitation	25mm (ex390, ex430, ex470, ex530, ex550, ex610, ex630, ex710, ex720)
Emission	em535WA, em600WA, em700WA
<b>PERFORMANCE</b>	
Imaging Areas	Zoom: 2x2 cm to 20x20 cm, continuous zoom Fixed: 13.5 x 13.5 cm
Dynamic Range	>4.0 orders of magnitude
Data Acquisition	16-bit single capture, n-bit data acquisition
<b>COMPUTER INTERFACE</b>	Ethernet Windows XP/7 and Intel Mac OSX compatible
<b>SOFTWARE</b>	Molecular Imaging Software

**Carestream**  
Molecular Imaging

 **one source**  
for all your molecular imaging needs